

# Los Angeles Department of Water & Power

**IF YOU ARE PLANNING CONSTRUCTION NEAR LADWP  
LINES AND EQUIPMENT**

**OR**

**IN PROXIMITY OF EASEMENTS, RIGHT-OF-WAY PERMITS**

**SAVE TIME... SAVE MONEY... STAY SAFE**

**CALL LADWP REAL ESTATE BEFORE YOU START  
(213)367-0562**

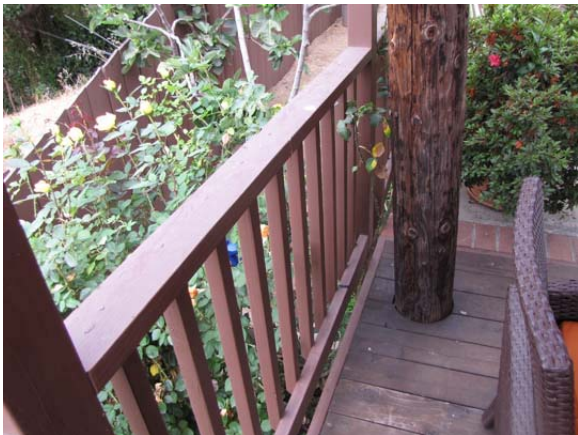


# *Access to Facilities*

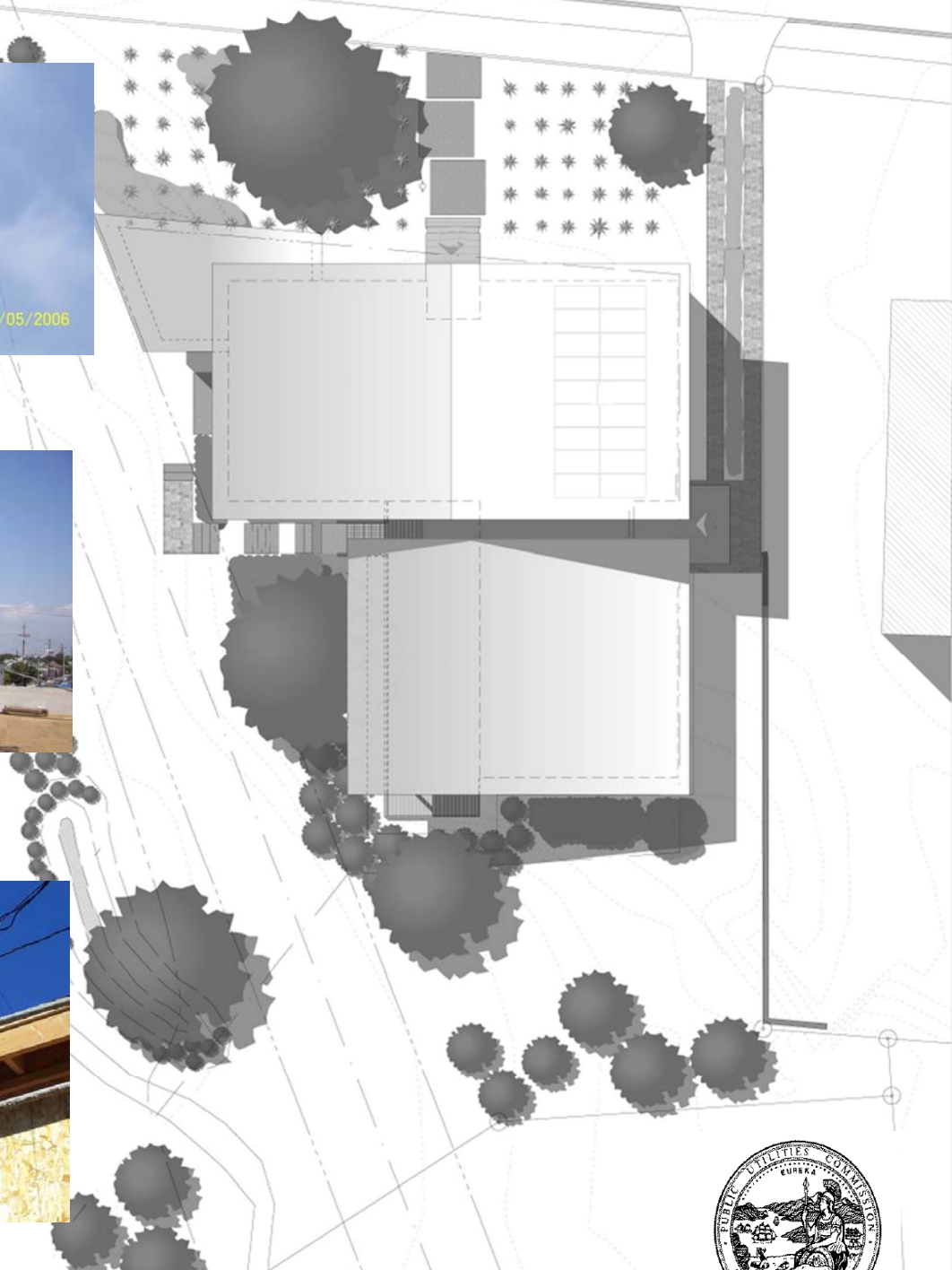
*Eventually all poles and transformers will require maintenance or upgrading for reliability and for the safety of the community. Therefore, one of the conditions of electrical service is access to LADWP facilities.*

*(Generally 5' of unobstructed access)*

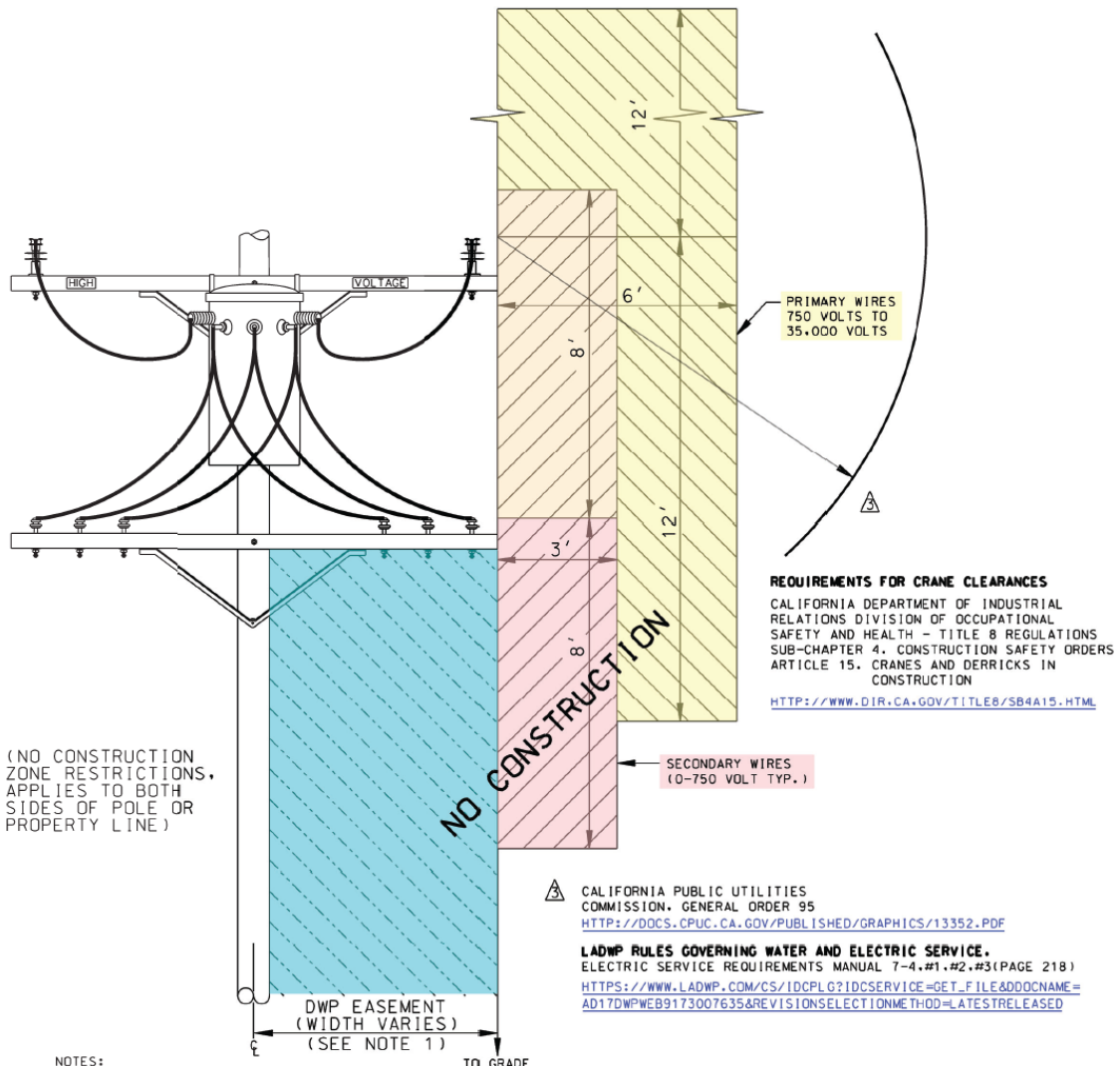
**SAVE TIME... SAVE MONEY... STAY SAFE  
CALL BEFORE YOU START  
(213)367-0562**



*Building additions, remodels & new construction including temporary structures such as scaffolding & construction site trailers must comply with California Public Utilities Commission General Order 95.*



*For more information go to  
[docs.cpuc.ca.gov/published/Graphics/13352.PDF](https://docs.cpuc.ca.gov/published/Graphics/13352.PDF)*



# CALIFORNIA PUBLIC UTILITIES COMMISSION GENERAL ORDER 95 REQUIREMENTS

**CAUTION** CALIFORNIA PUBLIC UTILITIES COMMISSION. GENERAL ORDER 95  
[HTTP://DPCS.CPUBC.CA.GOV/PUBLISHED/GRAPHICS/13352.PDF](http://dpcs.cpubc.ca.gov/PUBLISHED/GRAPHICS/13352.PDF)  
**LADWP RULES GOVERNING WATER AND ELECTRIC SERVICE.**  
 ELECTRIC SERVICE REQUIREMENTS MANUAL 7-4, #1, #2, #3 (PAGE 218)  
[HTTPS://WWW.LADWP.COM/CS/IDCPLG?IDCSERVICE=GET\\_FILE&DDOCNAME=AD17DWPWE9173007635&REVISION=SELECTIONMETHOD=LATESTRELEASED](https://www.ladwp.com/cs/IDCPLG?IDCSERVICE=GET_FILE&DDOCNAME=AD17DWPWE9173007635&REVISION=SELECTIONMETHOD=LATESTRELEASED)

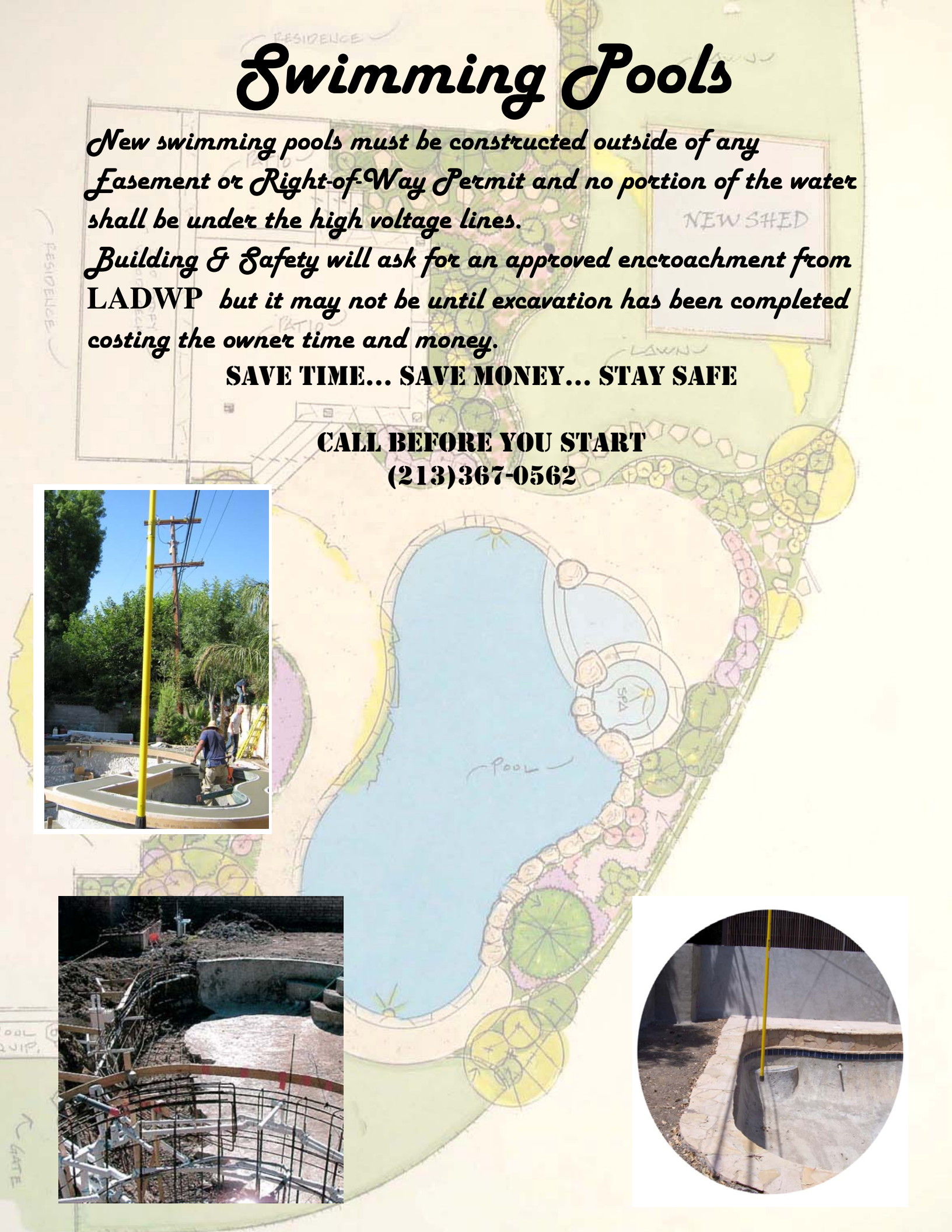
# Swimming Pools

*New swimming pools must be constructed outside of any easement or Right-of-Way Permit and no portion of the water shall be under the high voltage lines.*

*Building & Safety will ask for an approved encroachment from LADWP but it may not be until excavation has been completed costing the owner time and money.*

**SAVE TIME... SAVE MONEY... STAY SAFE**

**CALL BEFORE YOU START  
(213)367-0562**



# Landscaping

*Everyone loves a nicely landscaped yard but think ahead when planting around Utility poles or under wires. All poles have to be replaced eventually and it would be a shame to loose your beloved poodle topiary. Trees and electricity do not mix, to avoid future outages stay away from tall growing trees & palm trees are never a good idea under wires.*

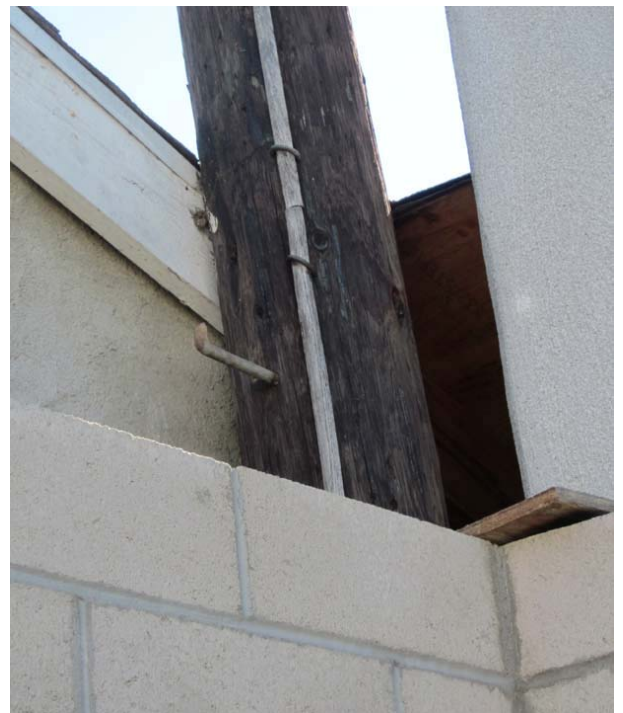
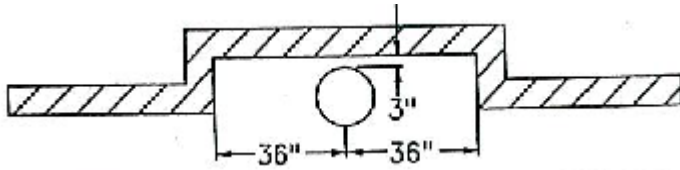
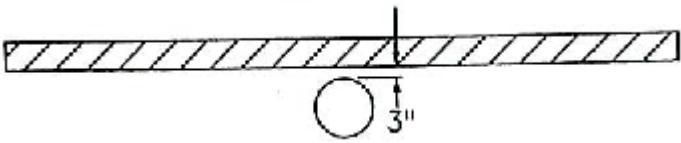
**SAVE TIME... SAVE MONEY... STAY SAFE**

**CALL BEFORE YOU START  
(213)367-0562**



# Fences & Block Walls

*Measurements on the 3 options shown below are the minimum allowable distance between a pole and any type of wall. The pole must be accessible from the lot in which the pole is located.*

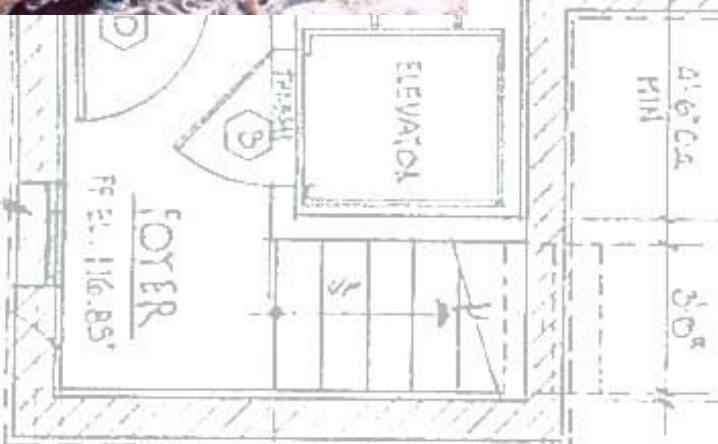


# Underground power & excavations

*Even if you are only digging deep enough to plant a tree or install a fence call Dig Alert to find any substructures, conduit or cable that may be beneath your property. Underground power lines may be as shallow as 24 inches and possibly less.*

*Consult with LADWP prior to excavation near a pole. The customer is liable for any damages that may occur as a result of this work. LADWP will not support a pole for excavations.*

**CALL DIGALERT @ 811**





*Contact Information*

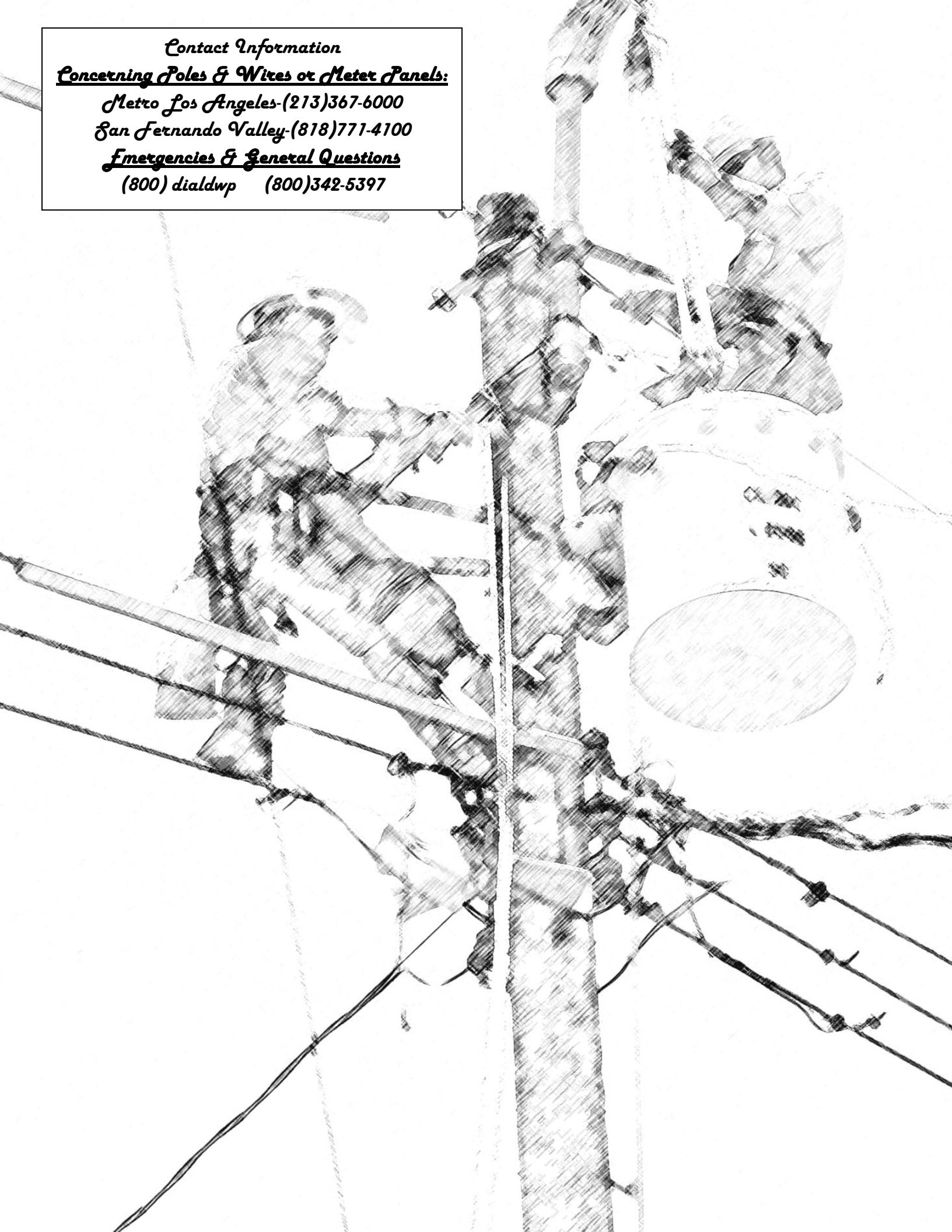
*Concerning Poles & Wires or Meter Panels:*

*Metro Los Angeles-(213)367-6000*

*San Fernando Valley-(818)771-4100*

*Emergencies & General Questions*

*(800) dialdwp (800)342-5397*





*...and please drive safely*

